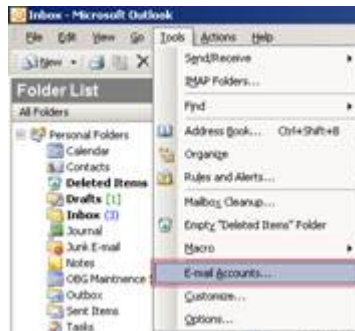


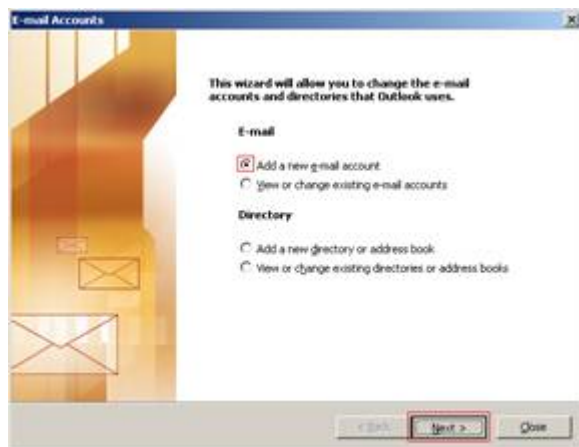
Add a new email account to Outlook 2003 using a Plesk Server

Process

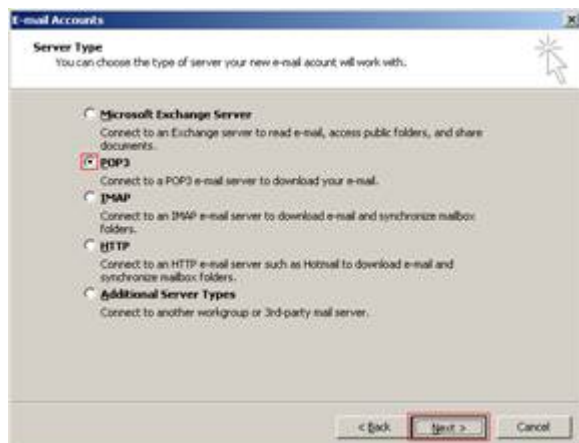
- 1) Open Outlook 2003.
- 2) Go to *Tools | E-Mail Accounts*



- 3) Select the first option; *Add a new e-mail account* and click *Next*.



- 4) Select *POP3* and click *Next*.

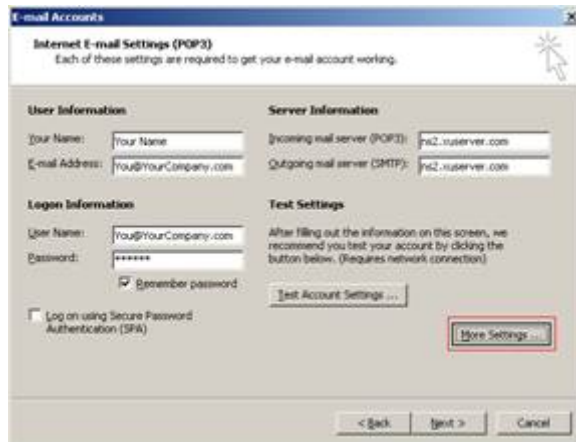


5) Enter the following information



Your Name: <Your full name>
 E-mail Address: <Your full email address>
 User Name: <Your full email address>
 Password: <Your email password>
 Incoming mail server: domain
 Outgoing mail server: domain

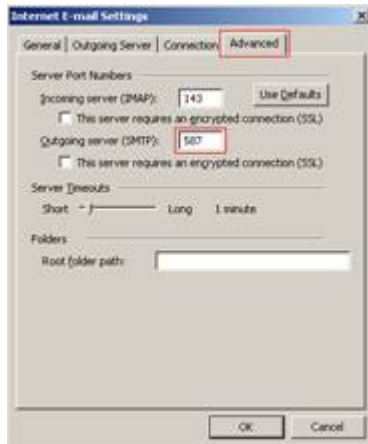
6) Click *More Settings*.



7) Go to the *Outgoing Server* tab and place a checkmark next to *My outgoing server (SMTP) requires authentication*.



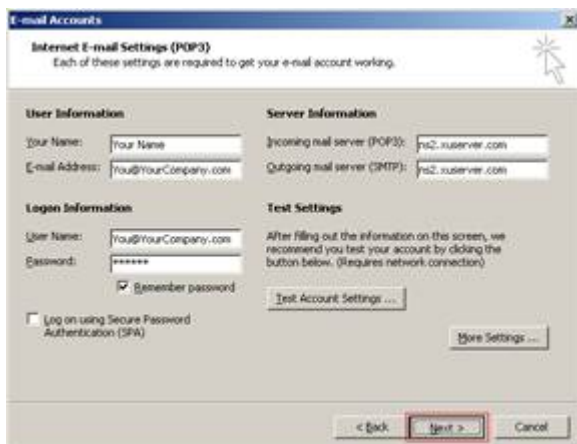
8) Go to the *Advanced* tab and change the *Outgoing server (SMTP)* port number to **587**.



9) Click OK.



10) Click Next.





O'BRIEN BUSINESS GROUP

a technology solutions provider

The O'Brien Business Group

209 4th Avenue South Suite 101B

Edmonds, WA 98026

(425) 233-6990

11) Click Finish.

